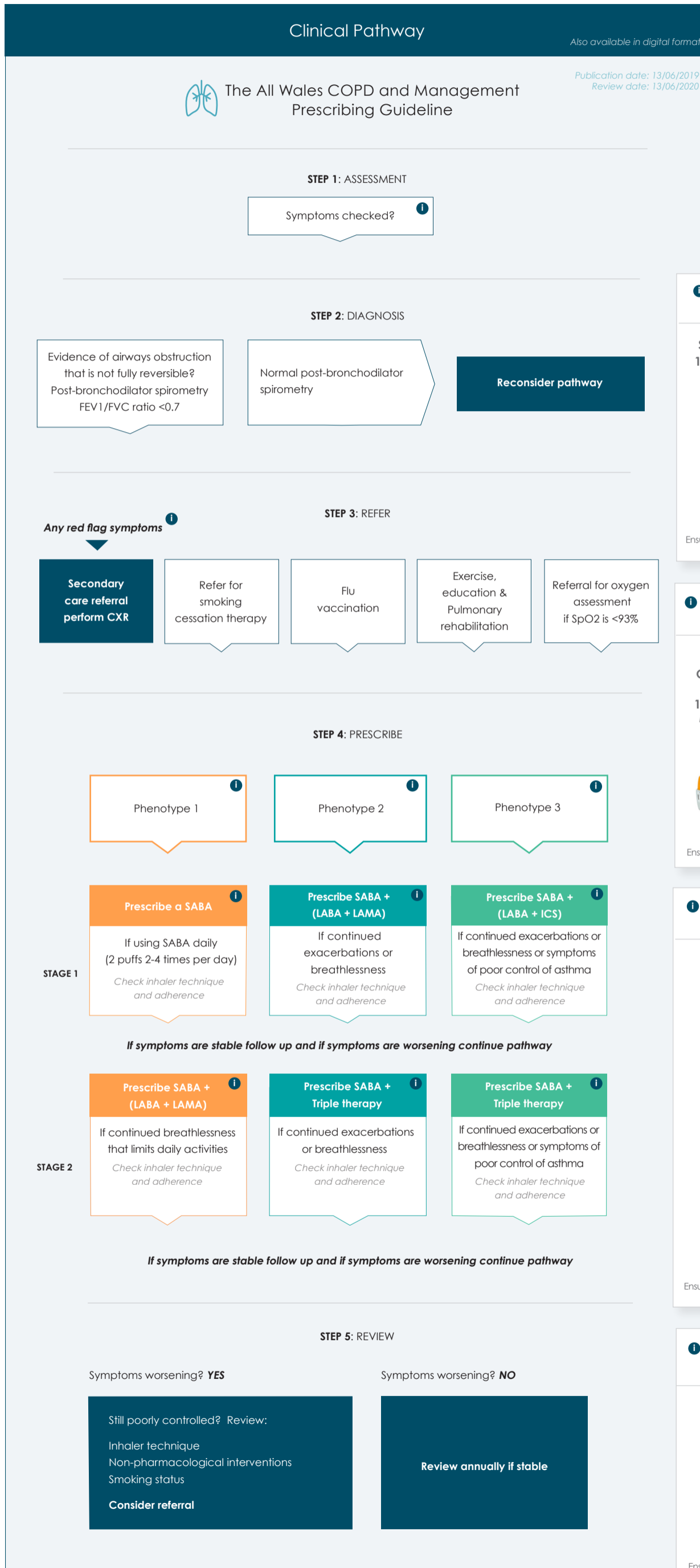


The All Wales COPD Management and Prescribing Guideline

Endorsed by All Wales Medicines Strategy Group



STEP 1 INFORMATION: ASSESSMENT

1 COPD Symptoms Checklist

Symptom Checklist

- Smoking history
- Breathlessness (MRC)
- Cough
- Haemoptysis
- Sputum
- Number of exacerbations
- CAT score
- Anxiety
- Depression

Investigations

- Post bronchodilator spirometry mandatory
- Chest X-ray (CXR)
- Full Blood Count (FBC)
- Oxygen Sats (SpO2)

STEP 3 INFORMATION: REFER

1 Red Flag Symptoms

Red Flag Symptoms

- Persistent cough in a smoker
- Haemoptysis
- Chest pain
- Unexplained weight loss
- Clubbing in a smoker
- Abnormal CXR

STEP 4 INFORMATION: PRESCRIBE

1 Phenotype 1

COPD with predominant breathlessness
Dyspnoea with less than 2 exacerbations per year

1 Phenotype 2

COPD with Exacerbation (+/- Breathlessness)
Two or more exacerbations per year

1 Phenotype 3

COPD with asthma overlap
Evidence of significant symptomatic or lung function response to steroids (oral or inhaled). Blood eosinophil counts >0.3

STEP 4 INFORMATION: PRESCRIBE

1 Prescribe a SABA

Below are options in this category

Salbutamol 100mcg MDI + spacer PRN Gentle and deep via spacer	Salbutamol 100mcg Easyhaler PRN Forceful and deep	Salbutamol 100mcg easibreathe PRN Gentle and deep
---	---	---



Ensure patient can use device. All MDIs must be used with a spacer

1 Prescribe a (LABA + LAMA)

Below are options in this category

Duaklir Genuair 340/12 1 puff BD Forceful and deep	Ultibro Breezhaler 50/110 1 puff OD Forceful and deep	Anoro Ellipta 55/22 1 puff OD Forceful and deep	Spiolto Respimat 2.5/2.5 2 puffs OD Gentle and deep
--	---	---	---



Ensure patient can use device. All MDIs must be used with a spacer

1 Prescribe SABA + (LABA + ICS)

Below are options in this category

Fobumix easyhaler 320/9 1 puff BD Forceful and deep	Relvar ellipta 92/22 1 puff OD Forceful and deep <small>Check licensed indicators</small>	Symbicort turbobhaler 400/12 1 puff BD Forceful and deep
---	--	--



Fostair nexthaler 100/6 2 puffs BD Forceful and deep	Fostair MDI 100/6 2 puffs BD via spacer Gentle and deep via spacer
--	--



Ensure patient can use device. All MDIs must be used with a spacer

1 Prescribe triple therapy

Below are options in this category

Trimbow MDI 87/5/9 2 puffs BD + spacer Gentle and deep via spacer	Trelegy Ellipta 92/55/22 1 puff OD Forceful and deep
---	--



Ensure patient can use device. All MDIs must be used with a spacer



More information at icst.info/the-all-wales-copd-and-management-prescribing-guideline